

10-Minute ihcDirect™ IHC Test Kits

ihcDirect is the conjugation of primary antibodies (Abs) including therapeutic Abs directly onto polymerized HRP enzymes. This approach provides superior performance that eliminates the need for secondary Abs, thus simplifying test procedures and delivering very fast IHC test results on frozen or FFPE tissues.

Monoclonal Antibody Descriptions (Anti-Human)	Cat. No. -0XX	-005 5ml	-010 10ml	-030 30ml
Calponin (Mouse, C126)*	K41026-*	¥106,000	¥168,000	
CD45 (Mouse, C95)**	K41010-**	¥106,000	¥168,000	
Cytokeratin 5 (Rabbit, R226)	K42014-	¥159,000	¥252,000	
Cytokeratin 7 (Rabbit, R284)*	K42015-*	¥159,000	¥252,000	
Cytokeratin 8/18 (Mouse, C94)	K41001-	¥106,000	¥168,000	
Pan-Cytokeratin (AE1/AE3, CK5, CK 8/18) Kit (Mouse)**	K41058-*	¥180,000	¥273,000	ご照会†
GFAP (Rabbit, R246)*	K42002-*	¥106,000	¥168,000	
Mart-1 (Mouse, A103)	K41009-	¥106,000	¥168,000	¥405,000
Podoplanin (Mouse, C125)*	K41025-*	¥106,000	¥168,000	
SMMHC (Mouse, SMMS-1)	K41024-	¥106,000	¥168,000	
ihc DAB Kit (Chromogen Only)	K50001-030			¥21,000

ihcDirect® assay polyHRP Staining Kit for frozen and FFPE Tissues

* Available Q2 2018
 ** Available in 2018

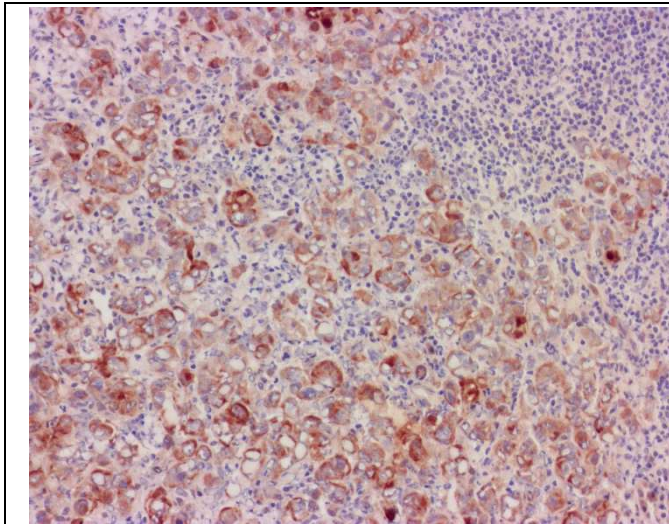
† Special order test kit size

005 = 25-50 IHC Test Kits
 010 = 50-100 IHC Test Kits
 030 = 150-300 IHC Test Kits

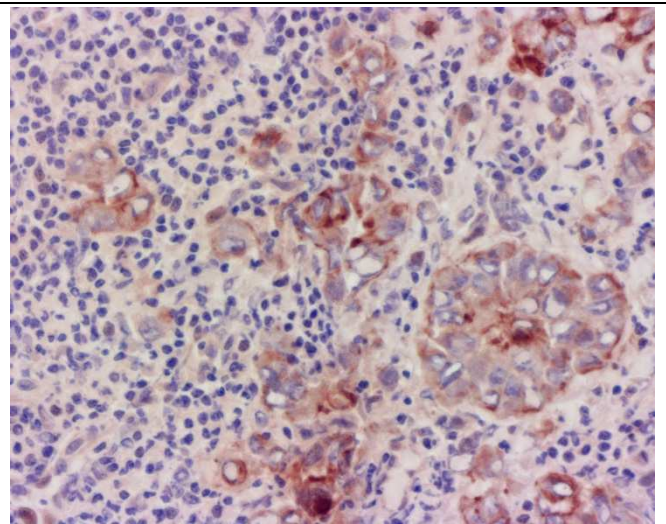


これらの製品は研究用です

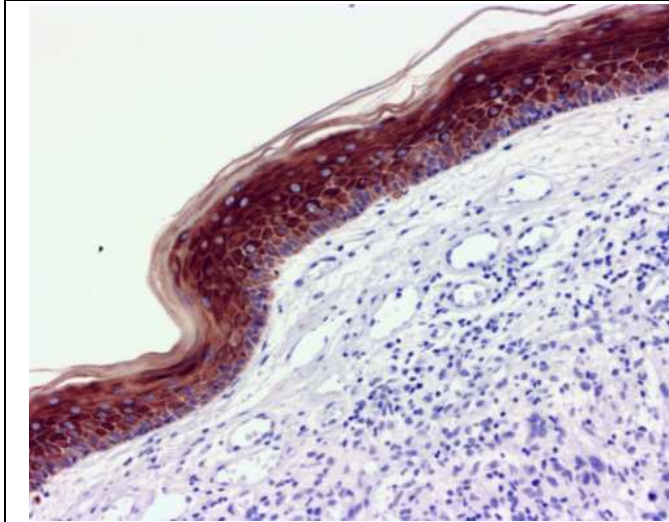
ihcDirect® assay polyHRP を使用した染色例



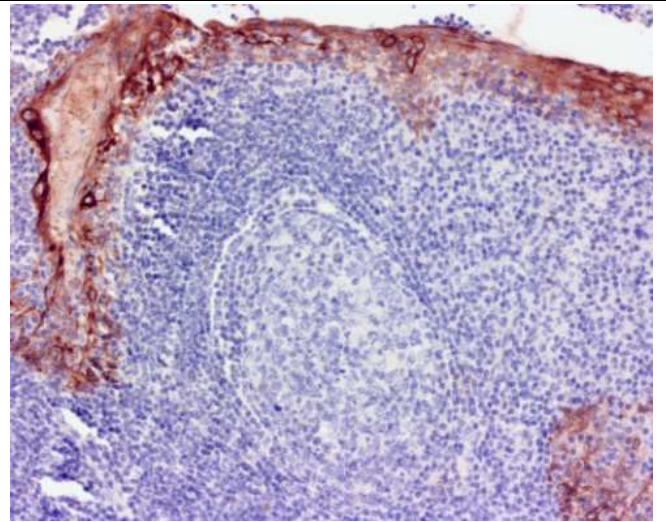
pHRP AE1&3 on Frozen breast Ca in LN-1



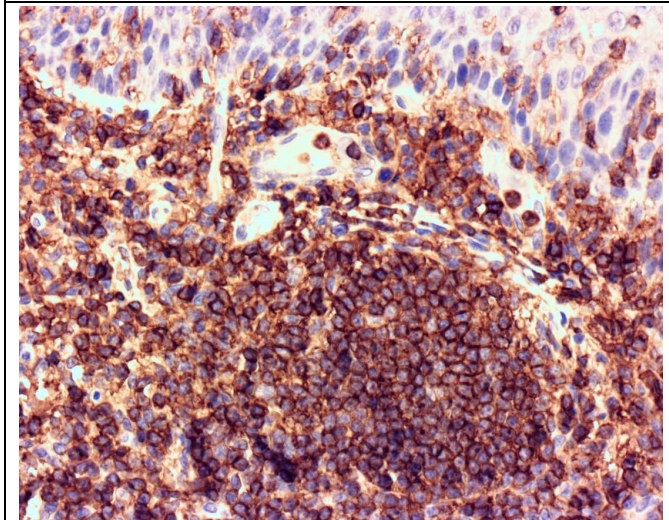
pHRP AE1&3 on Frozen breast Ca in LN-3



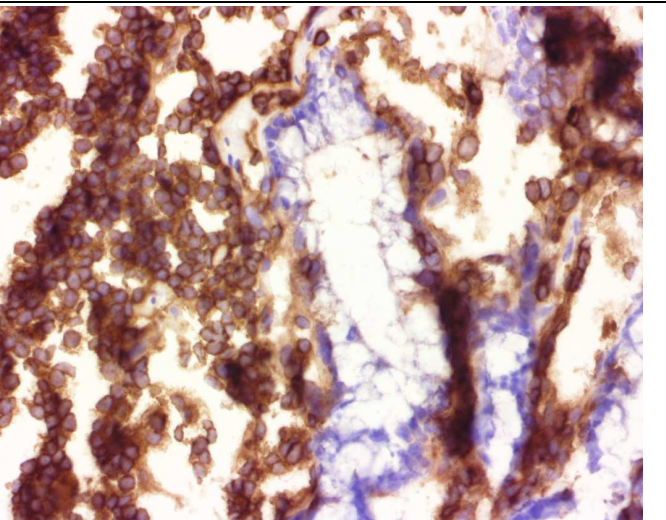
pHRP-AE1&AE3 on FFPE SKIN



pHRP-AE1&AE3 on FFPE TONSIL



pHRP-CD45 on FFPE TONSIL



pHRP-CD45 on frozen COLON tissue



TANNER GROUP

日本ターナー株式会社

〒532-0003 大阪市淀川区宮原1-11-11

tel: 06-6393-4710(代) fax: 06-6393-4720

e-mail: support@japantanner.co.jp

Internet: www.japantanner.co.jp